

Step By Step: Dash Gauge Seals Replacement

So you've restored your gauges back to new again but don't know where to find the seals that keep the gauges from scratching up your paint.



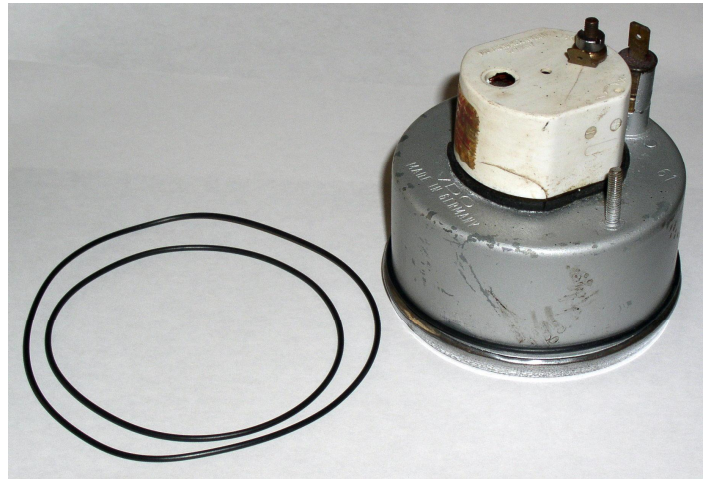
There are two sizes of gauges on T34s, small & large. The 1962 through early-1965 (up to chassis #345 020 907) T34s had four matching small-diameter gauges across the dash. Early-1965 (from chassis #345 020 908) through 1969 T34s had a larger diameter speedometer gauge so they had three small-diameter gauges & one large-diameter gauge. The seal for the gauges has never been available from suppliers, but we've found that plumbing O-rings are the right dimensions and are available in both sizes. The best place to find these are at an industrial plumbing supply store, not your local hardware store or Home Depot.

PARTS:

- Small diameter gauge seal (8.0 cm) = 341 957 375
- Large diameter gauge seal (9.5 cm) = 341 957 375A

Although there is probably a plumbing supply store locally to you, here is the source for the seals we found that work. Marshall's Industrial Hardware can be reached at 858 271 5555, or by mail at 8423 Production Avenue, San Diego, CA 92121. You can also email them at wehaveit@aol.com or fax your order to 858 271 6077. They accept credit cards and send the O-rings out next day.

The smaller gauge takes #042 and costs only a buck each. Early T34 owners will need four of these, and late T34 owners will need three. The larger gauge takes #045 and costs only \$1.05 each. Only late T34 owners will need one of these. So, for a total of \$4 + tax & postage we now have a source for these elusive seals! I checked their inventory and they have lots, and can order as many as we need!



I've found the easiest way to install them is not to remove the gauges but rather to loosen the gauge thumbscrews enough to slip the seals over the gauges. This makes for a quick and easy installation in 5 minutes. They fit snugly around the gauges and when compressed, do not squeeze outside of the trim ring. Perfect, inexpensive, and easy!